

FREEHOLD



House - End Terrace (EPC Rating: C)

**HEATHWAY,,  
DAGENHAM,,RM9 6AY.**

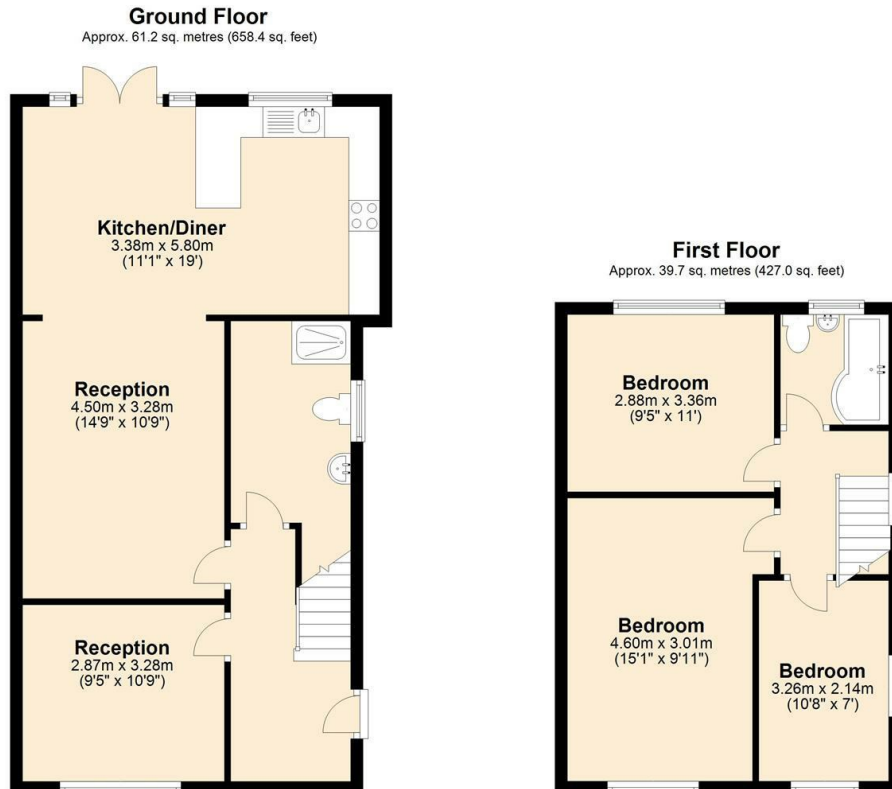
Guide Price

**£425,000**



# 3 Bedroom House - End Terrace located in Dagenham

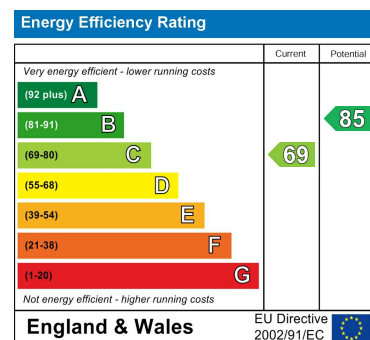
FABULOUS EXTENDED HOUSE....CLOSE TO HEATHWAY STATION. Huge kitchen diner TWO BATHROOMS, parking for THREE CARS, outbuilding. Two reception rooms. Guide Price £425,000-£450,000 NO CHAIN



Total area: approx. 100.8 sq. metres (1085.4 sq. feet)

Council Tax Band  
**C**

Energy Performance Graph



Call us on  
**020 8593 5933**  
dagenham@steps.me.uk  
www.steps.me.uk

Agents Note: Whilst every care has been taken to prepare these particulars, they are for guidance purposes only. All measurements are approximate and are for general guidance purposes only and whilst every care has been taken to ensure their accuracy, they should not be relied upon and potential buyers are advised to recheck the measurements.